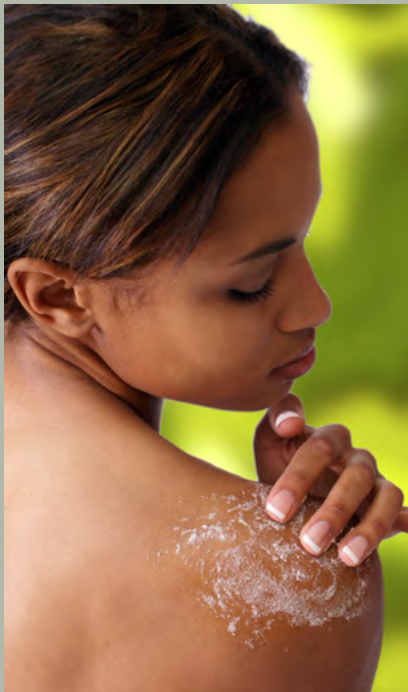


# ecobeads®

hard scrubbing beads

Ecobeads® are **biodegradable scrubbing beads** available in many **standard colors** at a **low cost**

- Botanical & Biodegradable
- No Microplastics
- Low Cost
- Many Colors
- Globally Allowed<sup>1</sup>
- Gentle yet Effective Exfoliation

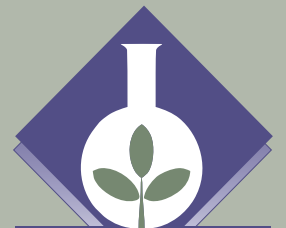
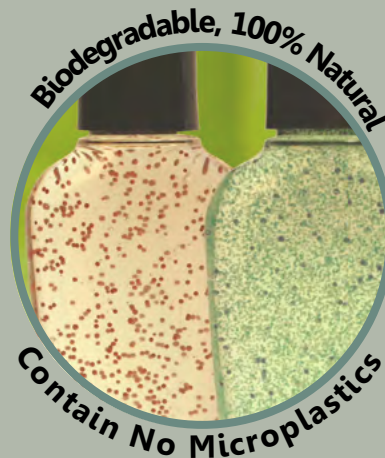


The Natural Solution



**iLabel®**

floratech.com/info  
Lot # SAMP100



**FLORATECH®**

www.floratech.com

sales@floratech.com

1. Ecobeads contain no microplastics, and are not restricted by any microplastics legislation.

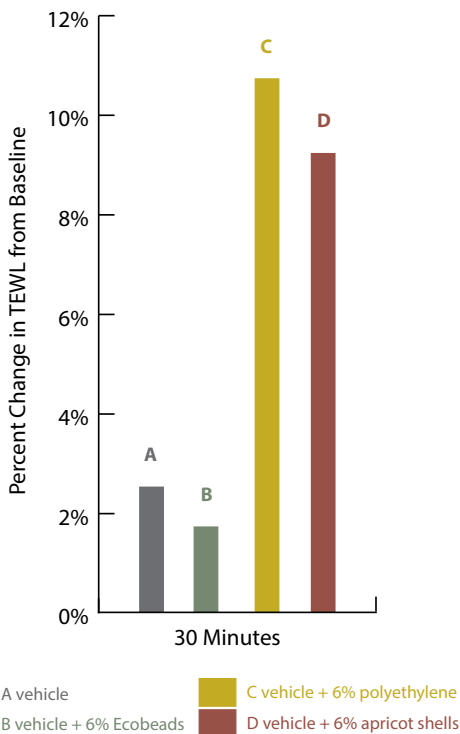


INCI: Stearyl Stearate, Euphorbia Cerifera (Candelilla) Wax, Jojoba Esters

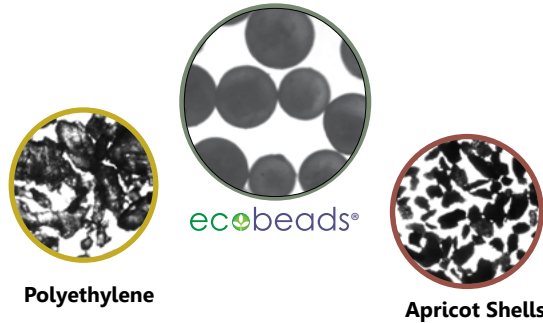
## Clinically Substantiated Claims

### Ecobeads Did Not Disrupt Skin Barrier Function

CS 15-063



CS 15-063: The test article containing 6% Ecobeads did not produce a statistically significant reduction in skin barrier function (i.e. increase in TEWL) over baseline or the vehicle.



### Ecobeads Gentle Yet Effective

Biodegradable Ecobeads have been shown to be gentler than polyethylene and apricot shells.

The International Dermal Institute only recommends the use of scrubs that do not result in irritation. They do not recommend using crushed fruit pits, shells or similar damaging materials,<sup>1</sup> making smooth, spherical Ecobeads the better choice than these other exfoliatives.



- <1000 microns
- Melting point: 55-65 °C

Ecobeads are spherical, hard beads available in a standard size of <1000 microns.

Applications	Typical Use Level
Skin Care (rinse-off applications)	1 - 20%
Florotech Formulations	Formula Number
Ecobeads Body Wash	<a href="#">B021</a> 🌿*
Gentle Face Scrub with Biodegradable Ecobeads	<a href="#">B022</a> 🌿*

\* Demo Available

Visit: [florotech.com/formulas](http://florotech.com/formulas)

Visit: [florotech.com/products](http://florotech.com/products) for more information on Florotech products.

1. Howard, Diana "Methods of Exfoliation" *International Dermal Institute*. Web.

**Global Regulatory Data**  
 CAS: 2778-96-3 (and) 8006-44-8 (and) 61789-91-1 or 92457-12-0  
 EC: 220-476-5 (and) 232-347-0 (and) 296-292-4  
 Globally Approved including:  
 Australia, China, EU, Japan, Korea and US  
*Reference Florotech SDS for pigment regulatory data.*

**Botanical Origin:** Palm (*Elaeis guineensis*), Candelilla (*Euphorbia cerifera*), and Jojoba (*Simmondsia chinensis*)

**Packaging:** 100 kg Drums (standard)  
 10 kg Pails (optional)