

The Natural Solution

# Florabeads® Carnauba

hard scrubbing beads



## Benefits & Functions:

- Gentle Exfoliant
- Biodegradable
- Globally Allowed<sup>1</sup>
- Stable
- Botanical
- Spherical



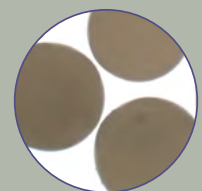
## Florabeads Carnauba

Biodegradable Florabeads Carnauba are hard, smooth botanical microspheres designed to function in various cosmetic formulas, including very low pH environments while maintaining their integrity. They are extremely durable and provide gentle yet effective exfoliation to the skin.

Florabeads Carnauba are more stable than other natural exfoliants. The International Dermal Institute only recommends the use of scrubs that do not result in irritation. They do not recommend using crushed fruit pits, shells or similar damaging materials,<sup>2</sup> making smooth, spherical Florabeads the better choice than these other natural exfoliants.

Florabeads Carnauba contain no microplastics and are not restricted by any microplastics legislation. Florabeads Carnauba are available in their natural, pigment-free color in a standard particle size range of 250 to 600 microns.

### Gentle



(100x)

Florabeads are an effective exfoliant and are mild on the skin.



**iLabel®**

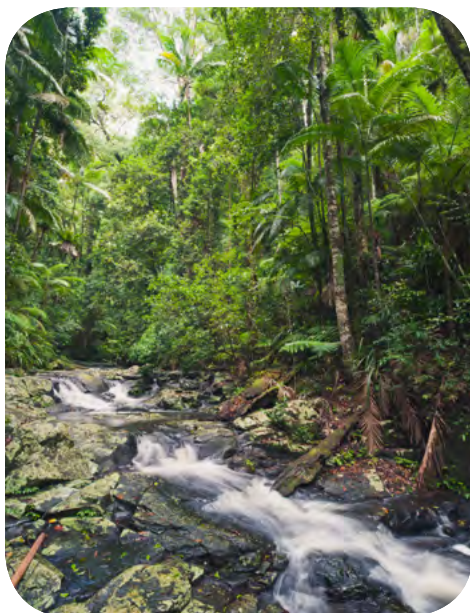
floratech.com/info  
Lot # SAMP102

sales@floratech.com

1. Florabeads contain no microplastics, and are not restricted by any microplastics legislation.  
2. Howard, Diana "Methods of Exfoliation" *International Dermal Institute*. Web.



## Botanical Hard Scrubbing Beads



***Florabeads Carnauba are made from sustainable, renewable resources***

### Florabeads Carnauba

- 250-600 microns
- natural color
- m.p. = 75 °C



***Florabeads Carnauba are 100% natural and biodegradable***

Applications	Typical Use Level
Bar Soaps	0.5 - 3%
Facial Cleansers	1 - 10%
Body Washes	0.5 - 10%

© Copyright 2011, 2018 International Flora Technologies, Ltd., All Rights Reserved. Exact INCI/trade names must be verified with Floratech's product specification sheets.

REV: JUN 2018

### Global Regulatory Data

CAS: 8015-86-9

EC: 232-399-4

Globally Approved including:

Australia, China, EU, Japan, Korea and US

*Reference Floratech SDS for pigment regulatory data.*

**Botanical Origin:** Palm (*Copernicia cerifera*)

**Packaging:** 100 kg Drum (standard)  
10 kg Pail (optional)